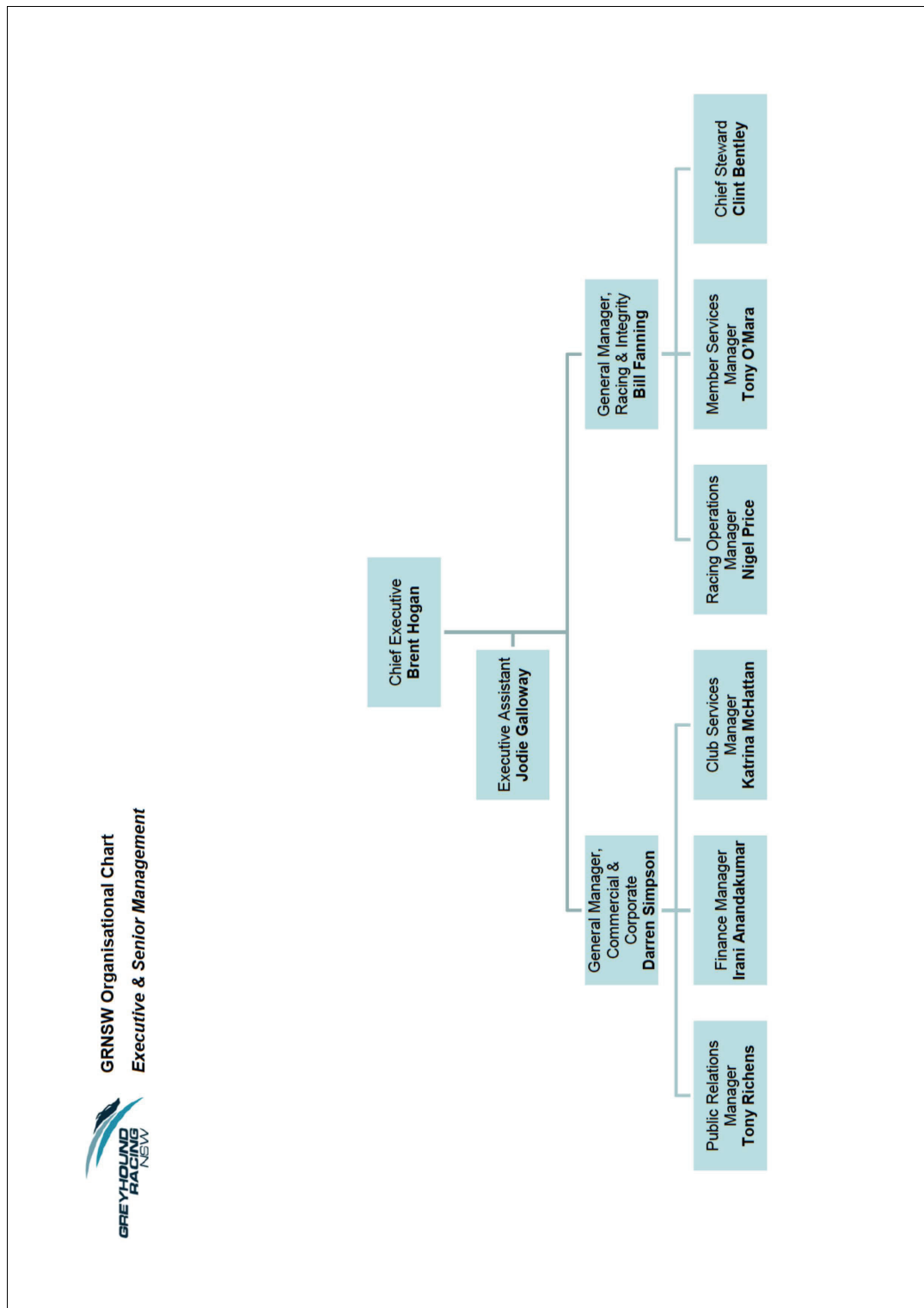


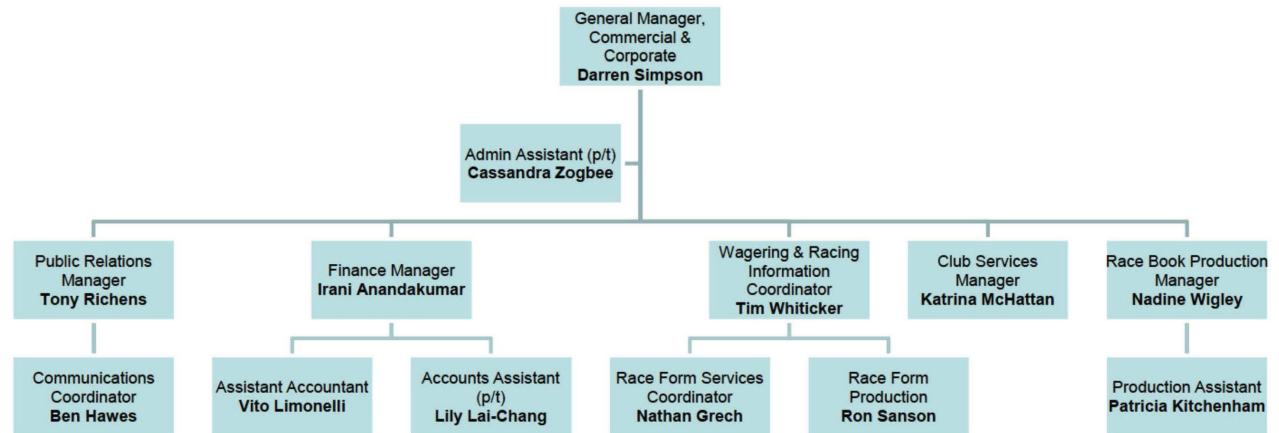
## Appendix N Organisational charts for GRNSW

### Organisational chart for GRNSW as at April 2009



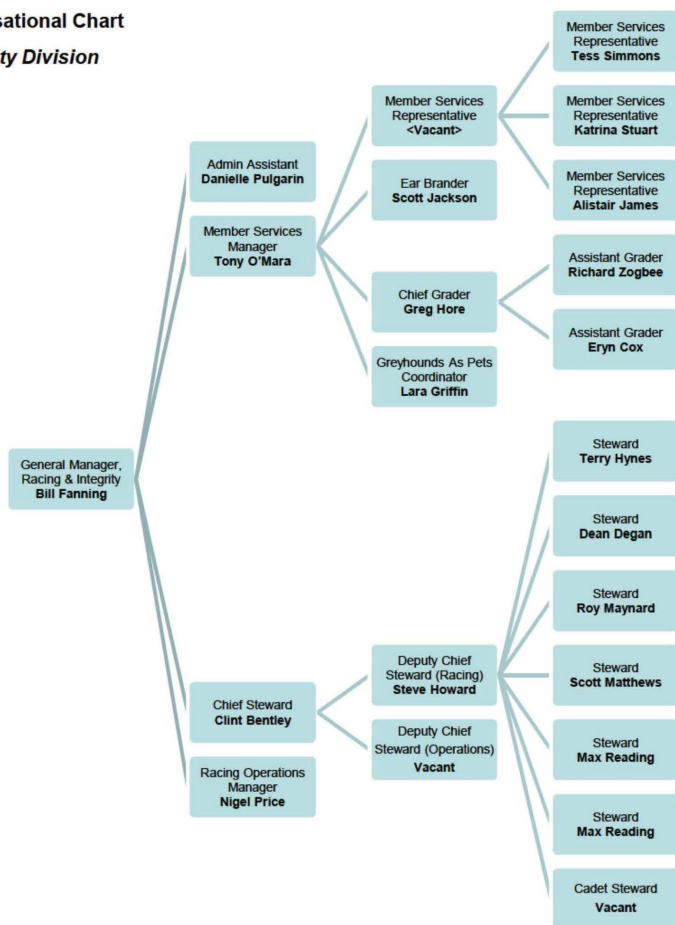


**GRNSW Organisational Chart**  
**Commercial & Corporate Division**

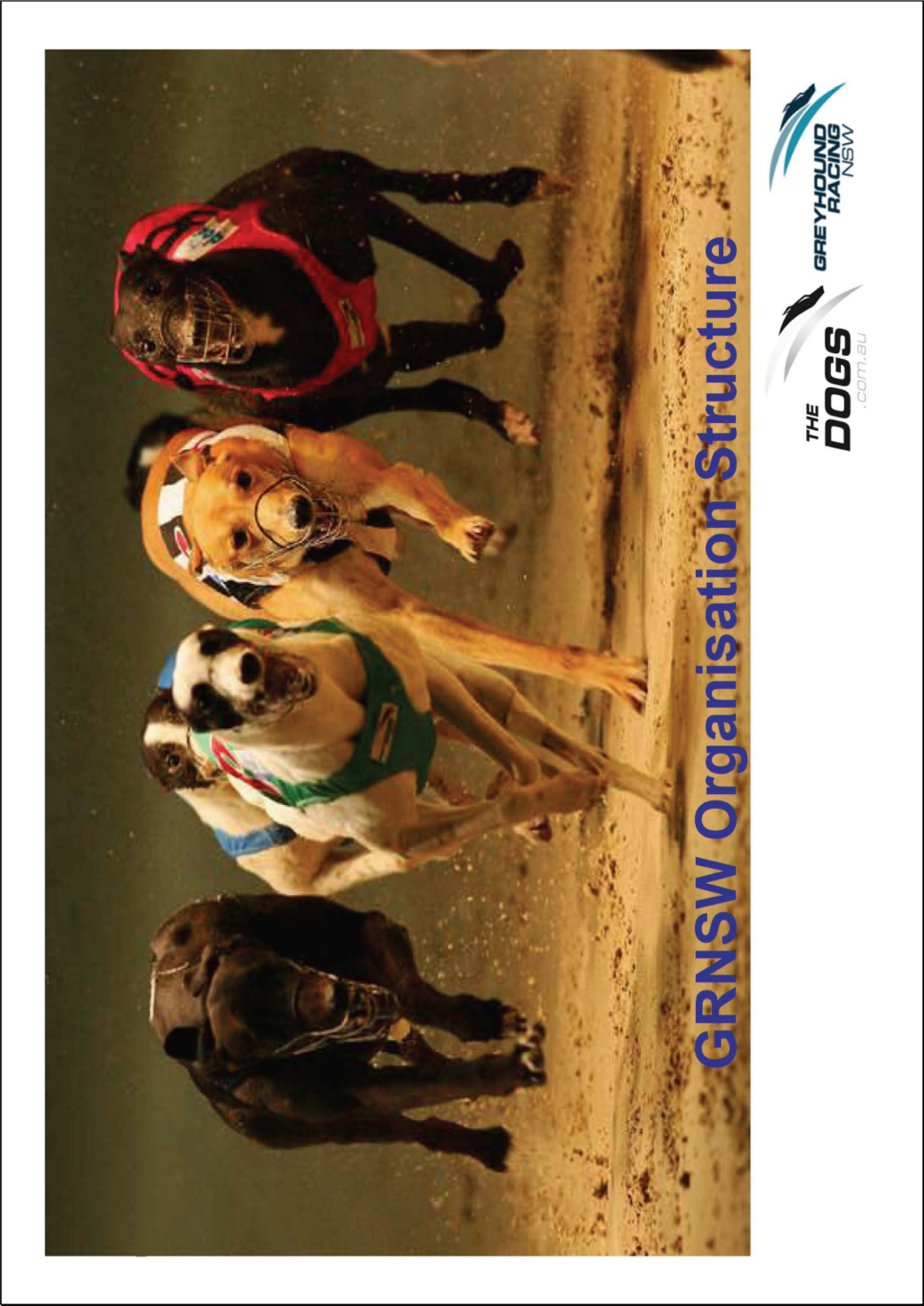




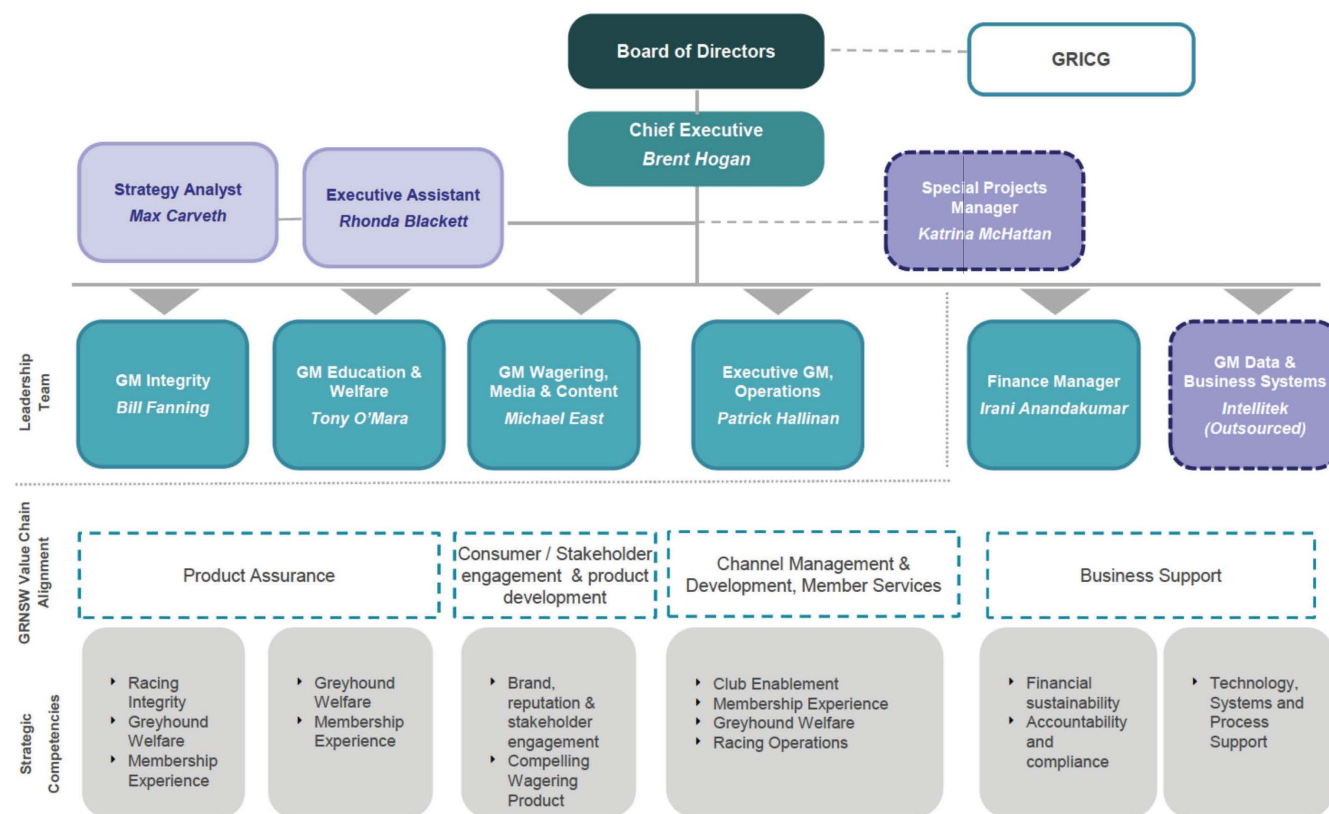
**GRNSW Organisational Chart**  
*Racing & Integrity Division*



Organisational chart for GRNSW as at February 2015



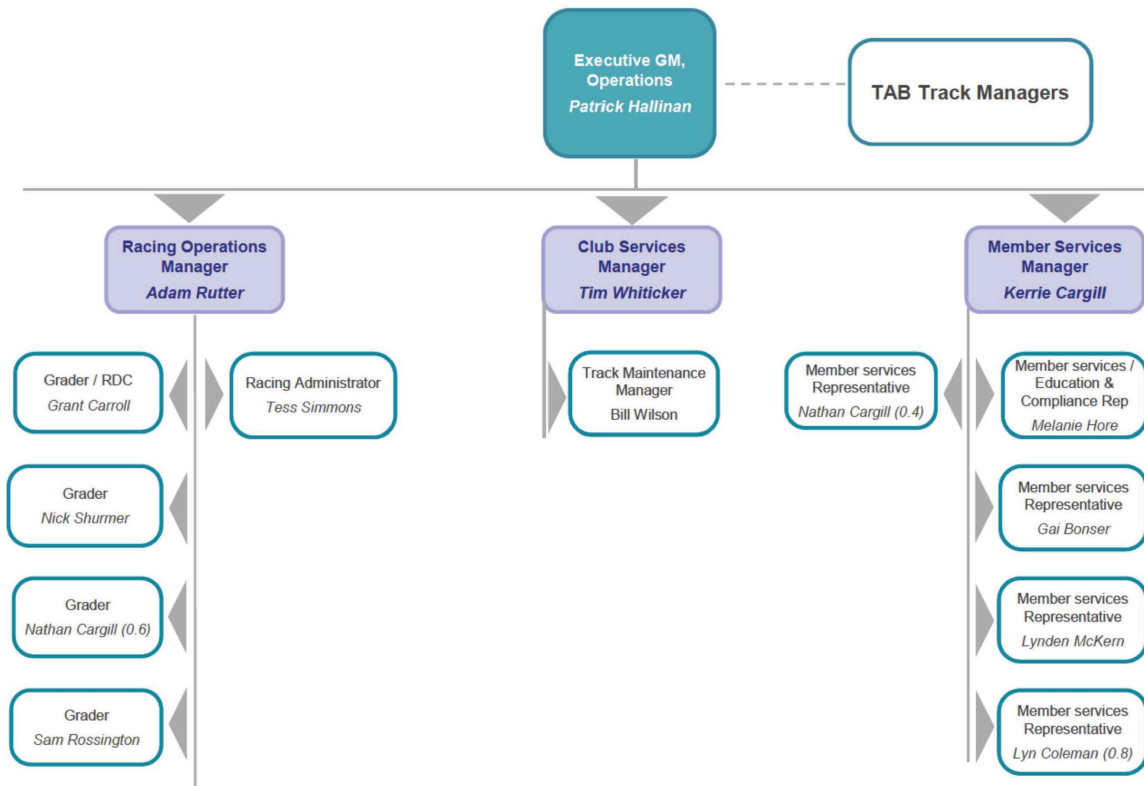
## Leadership Group



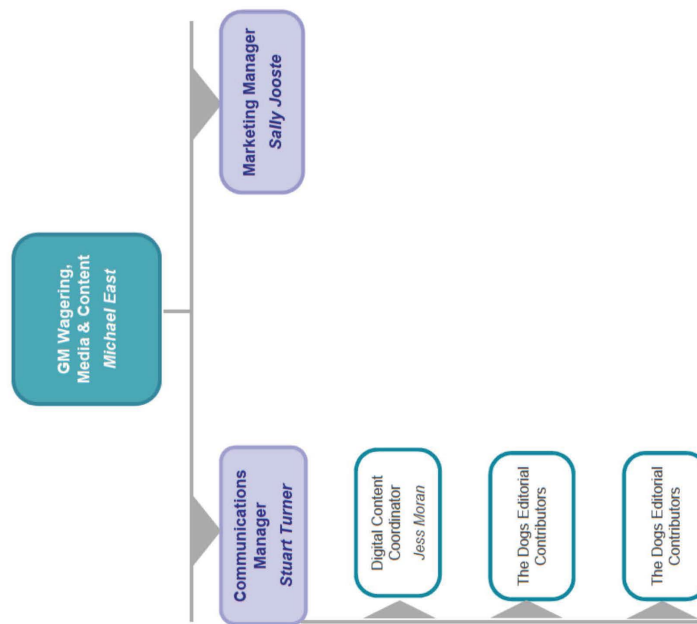
## Direct Management & Leadership Accountability by Function

Leadership Group Member	Function
<b>Brent Hogan</b> Chief Executive	<ul style="list-style-type: none"> <li>• Organisational oversight</li> <li>• Strategy &amp; direction</li> <li>• Finance</li> <li>• IT</li> <li>• People management</li> <li>• Corporate external relations</li> </ul>
<b>Patrick Hallinan</b> Executive GM, Operations	<ul style="list-style-type: none"> <li>• Member services</li> <li>• Licensing &amp; registrations</li> <li>• Ownership &amp; syndication</li> <li>• Club services &amp; funding</li> <li>• Industry capital development</li> <li>• Risk management &amp; insurance</li> <li>• Racing operations &amp; grading</li> </ul>
<b>Michael East.</b> GM, Wagering, Media & Content	<ul style="list-style-type: none"> <li>• Public &amp; corporate relations</li> <li>• Marketing</li> <li>• Wagering</li> <li>• Racing information services</li> </ul>
<b>Bill Fanning</b> GM, Integrity	<ul style="list-style-type: none"> <li>• Race day Stewarding</li> <li>• Investigations &amp; inquiries</li> <li>• Regulatory policy &amp; rule development</li> <li>• External relations with drug &amp; law enforcement agencies</li> </ul>
<b>Tony O'Mara</b> GM, Education & Welfare	<ul style="list-style-type: none"> <li>• Animal welfare policy &amp; compliance</li> <li>• Greyhound as Pets / Greenhounds</li> <li>• Participant education &amp; development</li> <li>• External relations with animal welfare agencies</li> </ul>

## Operations

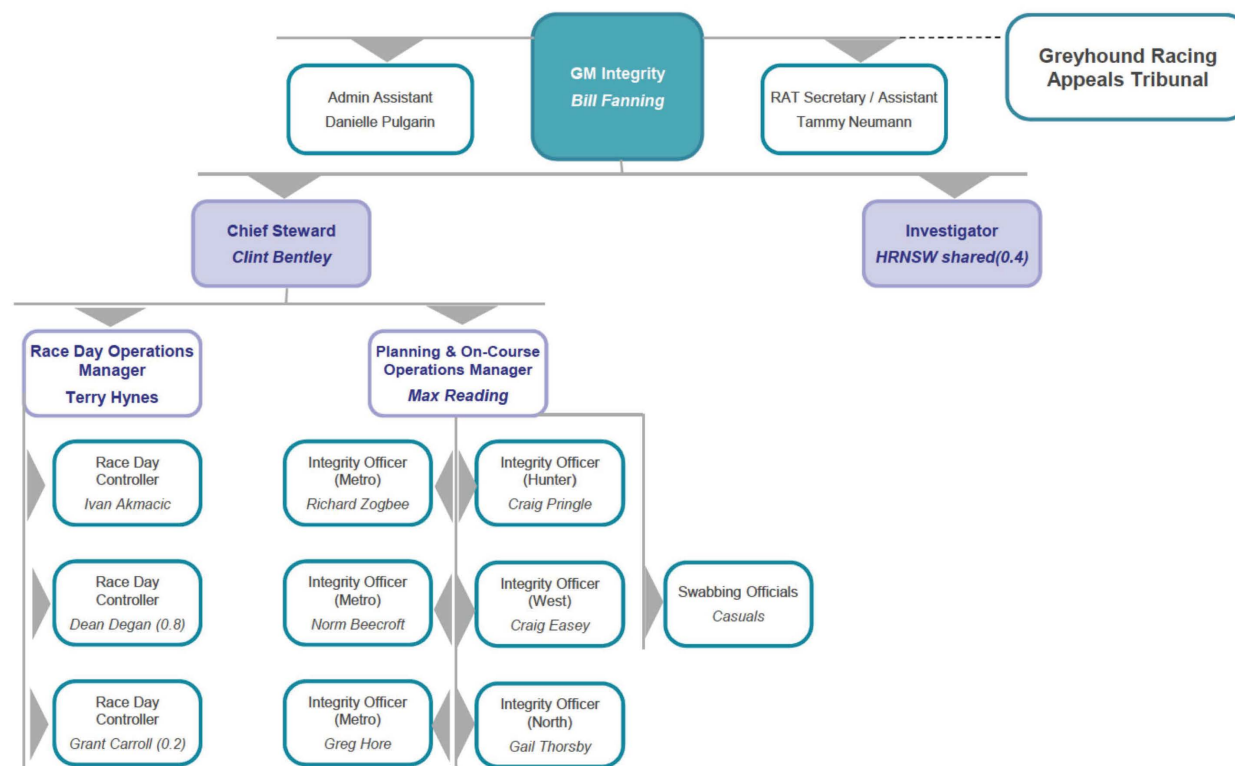


## Wagering, Media & Content

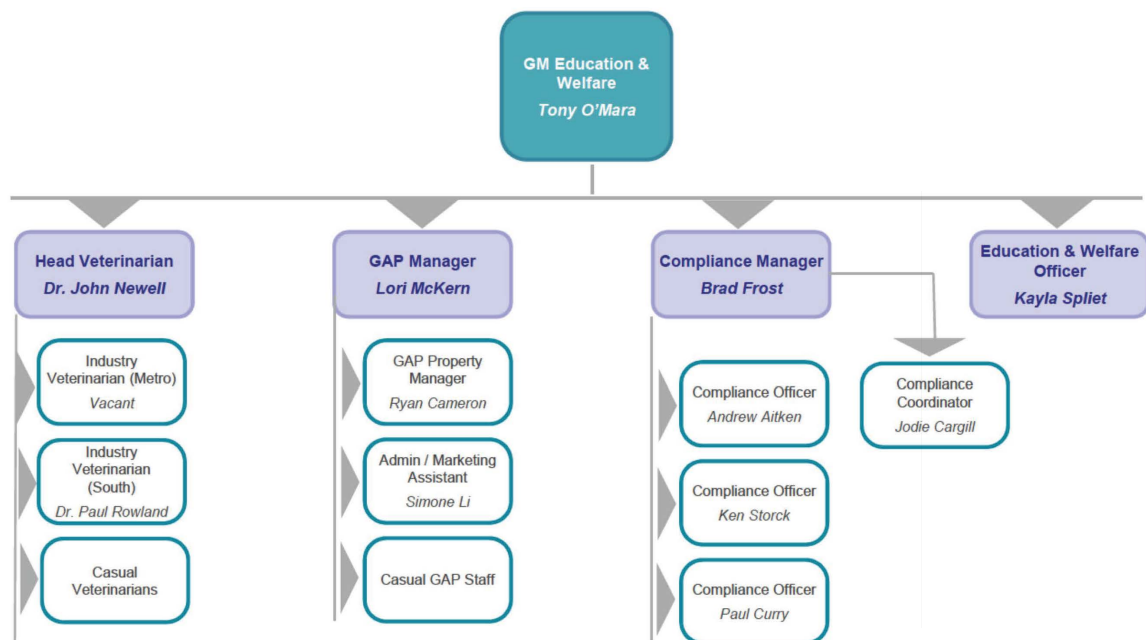




## Integrity

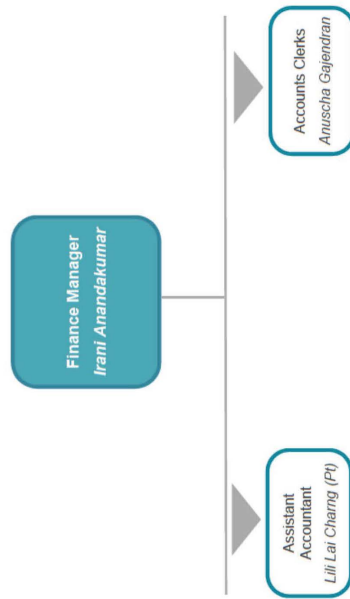


## Education & Welfare

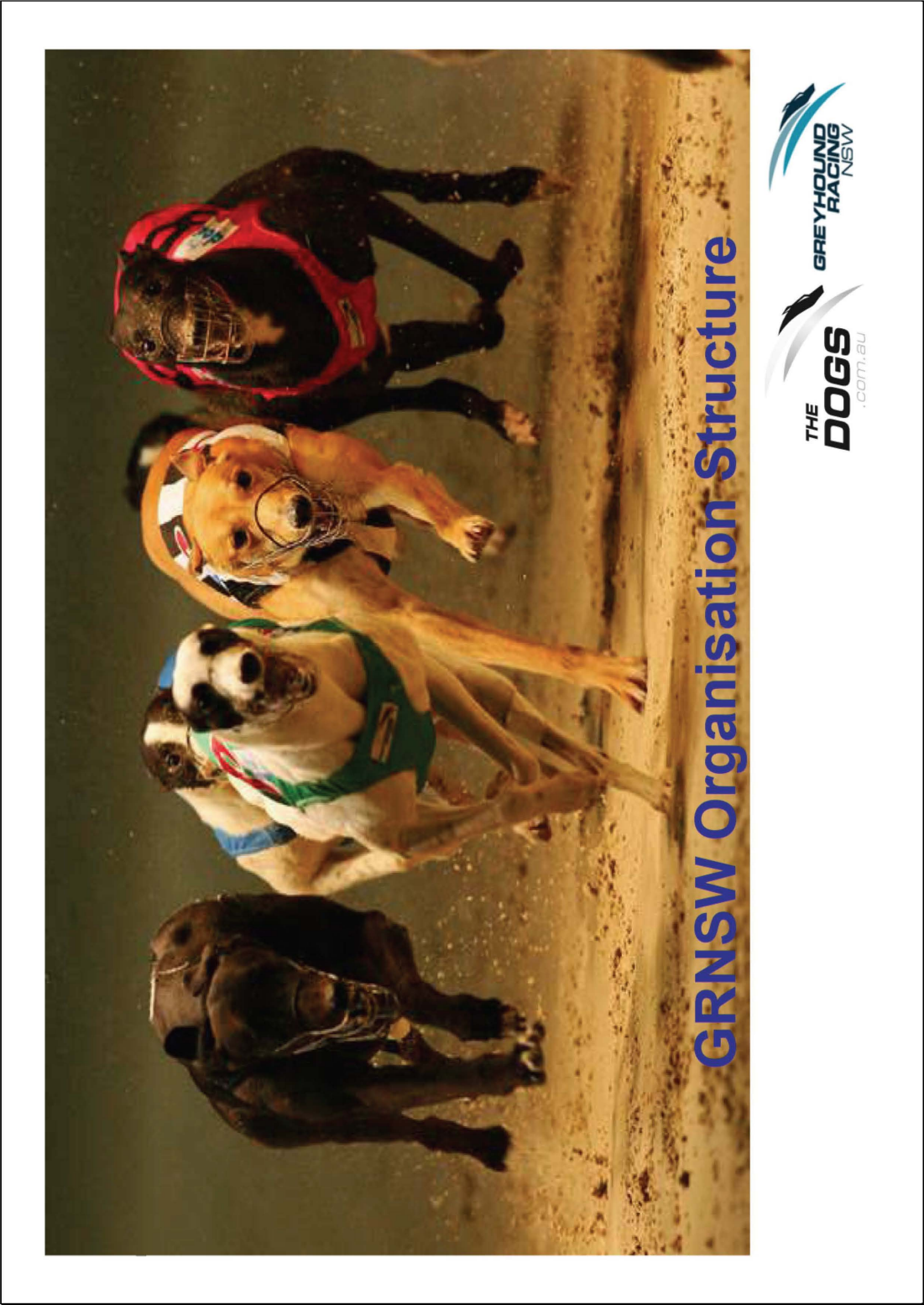


## Finance

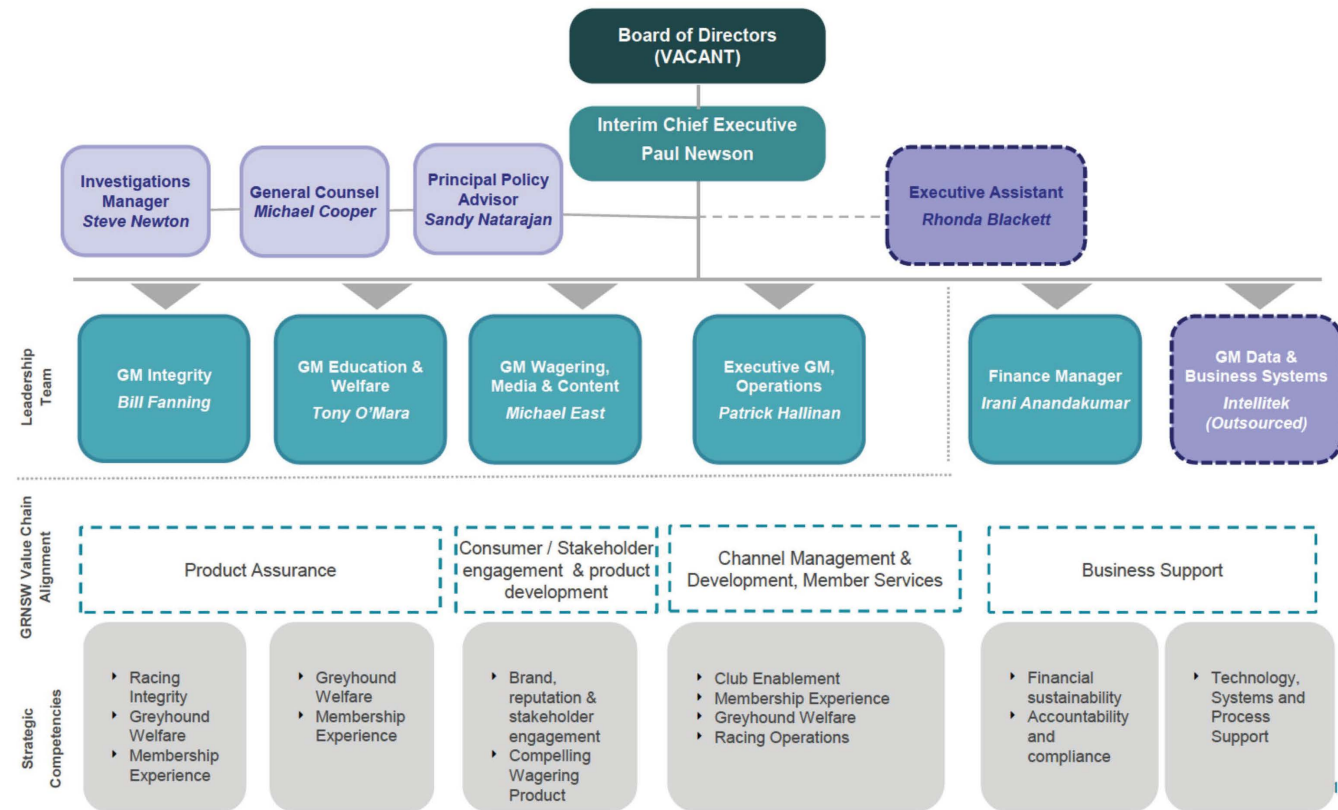
---



Organisational chart for GRNSW as at April 2015



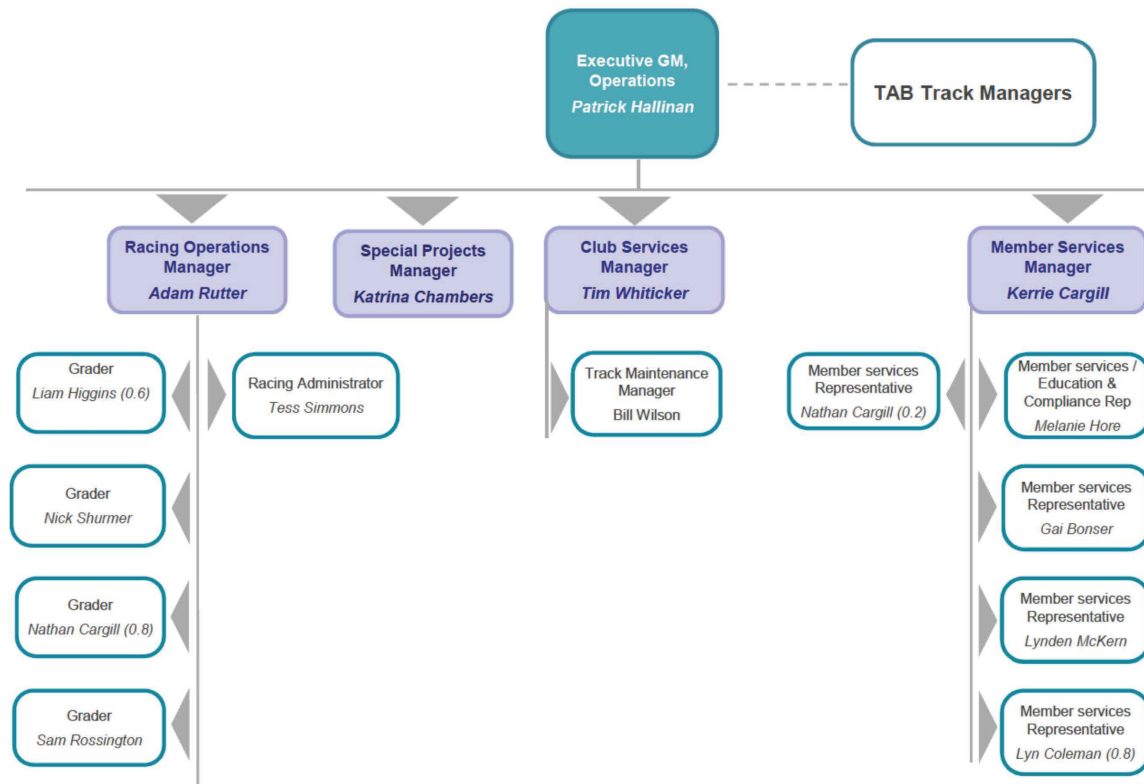
## Leadership Group



## Direct Management & Leadership Accountability by Function

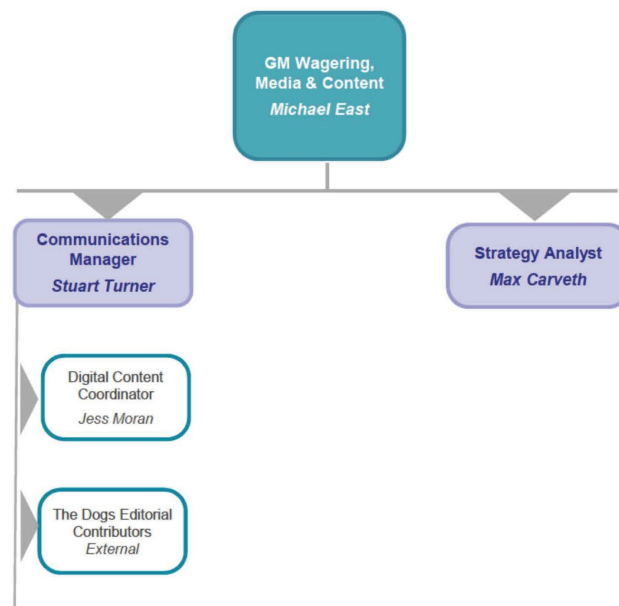
Leadership Group Member	Function
<b>Paul Newson</b> Chief Executive	<ul style="list-style-type: none"> <li>• Organisational oversight</li> <li>• Strategy &amp; direction</li> <li>• Policy, Legal and Finance and IT</li> <li>• People management</li> <li>• Corporate external relations</li> </ul>
<b>Patrick Hallinan</b> Executive GM, Operations	<ul style="list-style-type: none"> <li>• Member services</li> <li>• Licensing &amp; registrations</li> <li>• Ownership &amp; syndication</li> <li>• Club services &amp; funding</li> <li>• Industry capital development</li> <li>• Risk management &amp; insurance</li> <li>• Racing operations &amp; grading</li> <li>• Special Projects</li> </ul>
<b>Michael East.</b> GM, Wagering, Media & Content	<ul style="list-style-type: none"> <li>• Public &amp; corporate relations</li> <li>• Marketing</li> <li>• Wagering</li> <li>• Racing information services</li> </ul>
<b>Bill Fanning</b> GM, Integrity	<ul style="list-style-type: none"> <li>• Race day Stewarding</li> <li>• Investigations &amp; inquiries</li> <li>• Regulatory policy &amp; rule development</li> <li>• External relations with drug &amp; law enforcement agencies</li> </ul>
<b>Tony O'Mara</b> GM, Education & Welfare	<ul style="list-style-type: none"> <li>• Animal welfare policy &amp; compliance</li> <li>• Greyhound as Pets / Greenhounds</li> <li>• Participant education &amp; development</li> <li>• External relations with animal welfare agencies</li> </ul>

## Operations



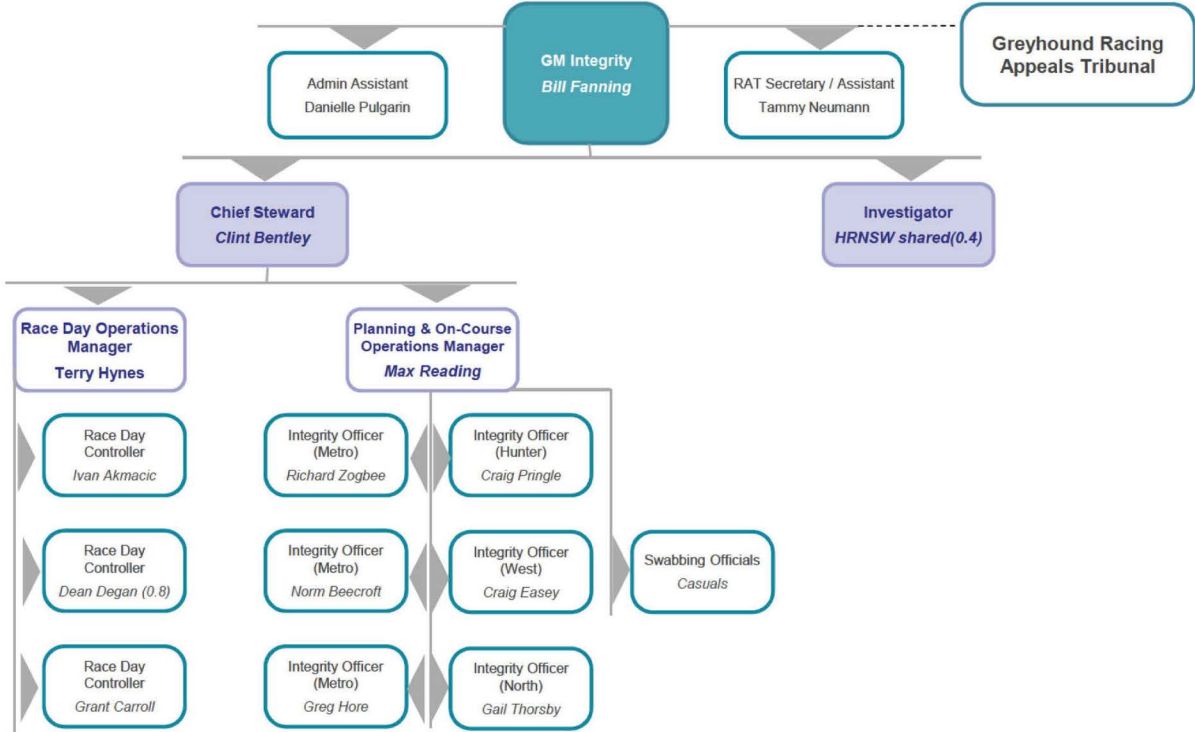
## Wagering, Media & Content

---

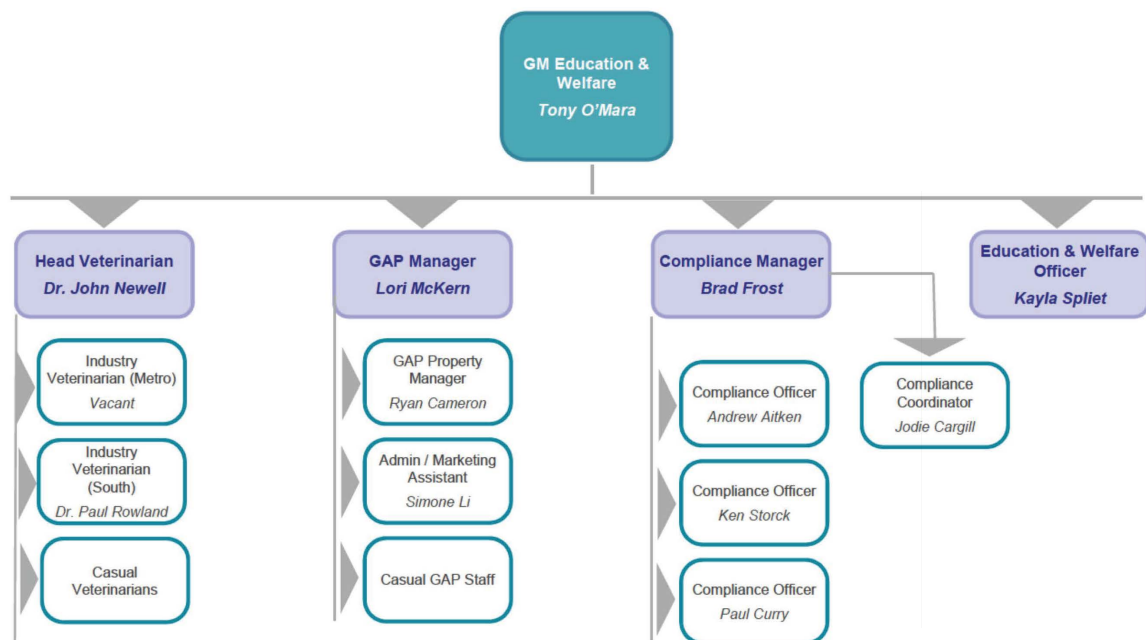




Integrity

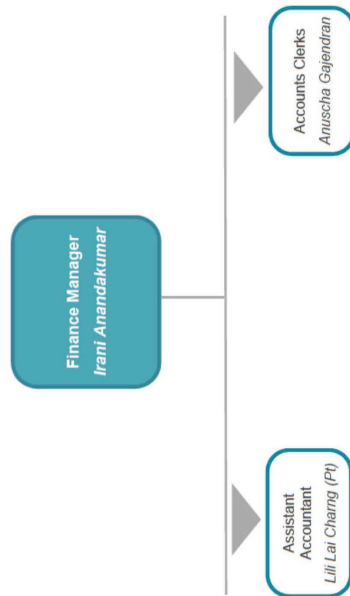


## Education & Welfare

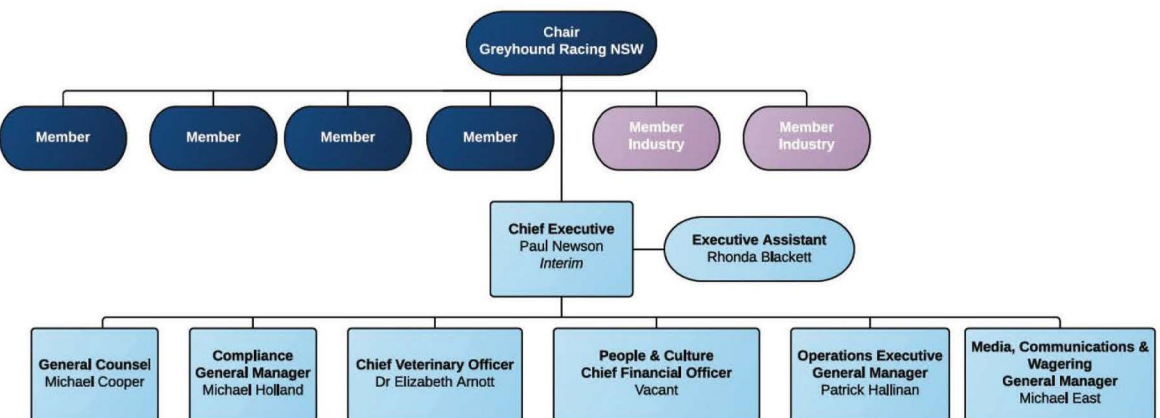


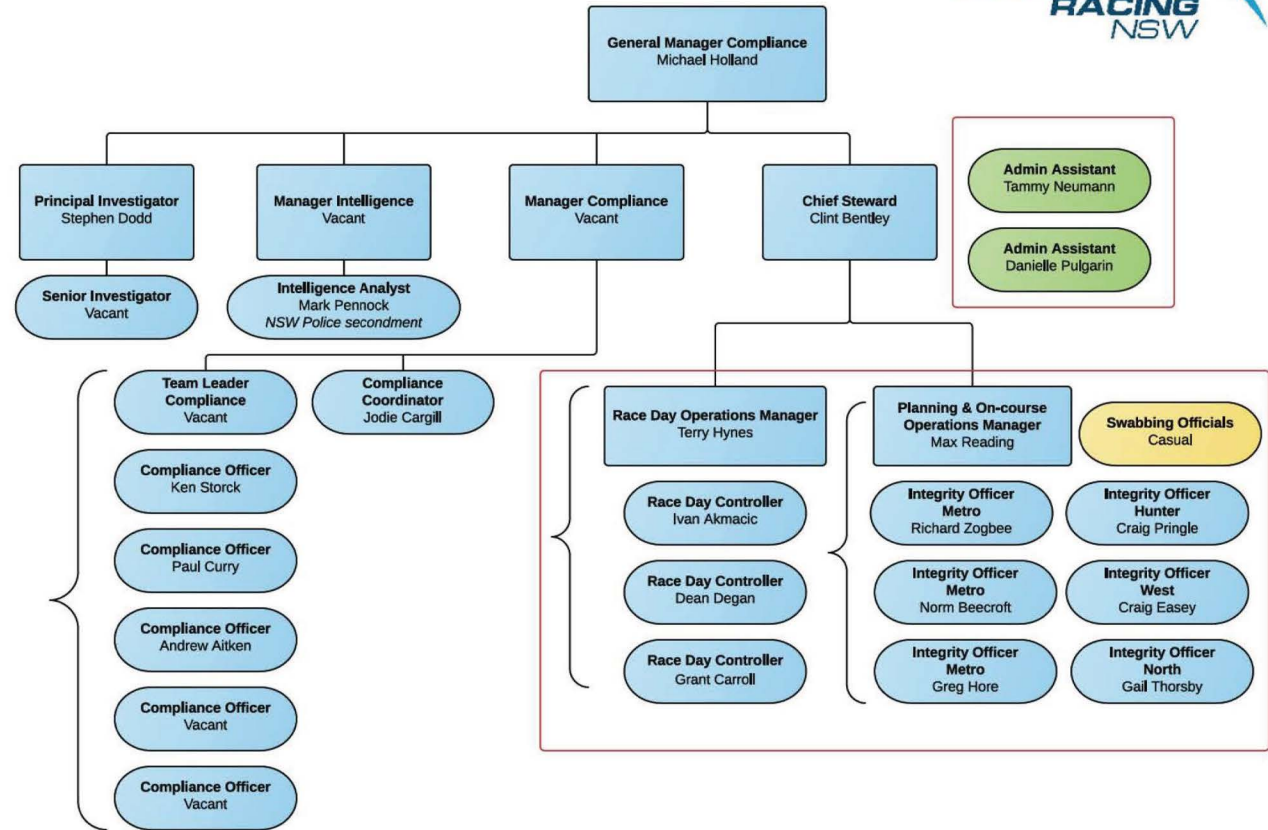
## Finance

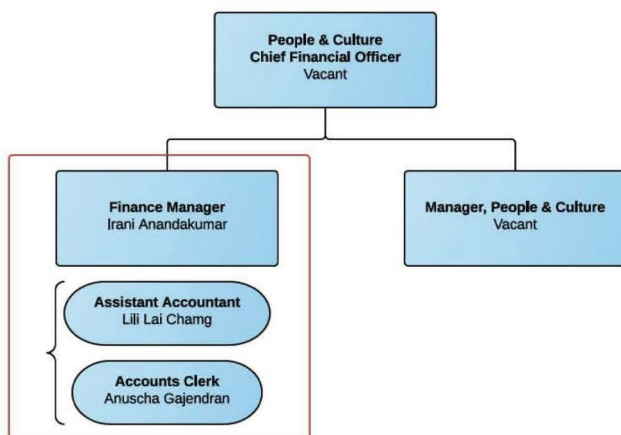
---

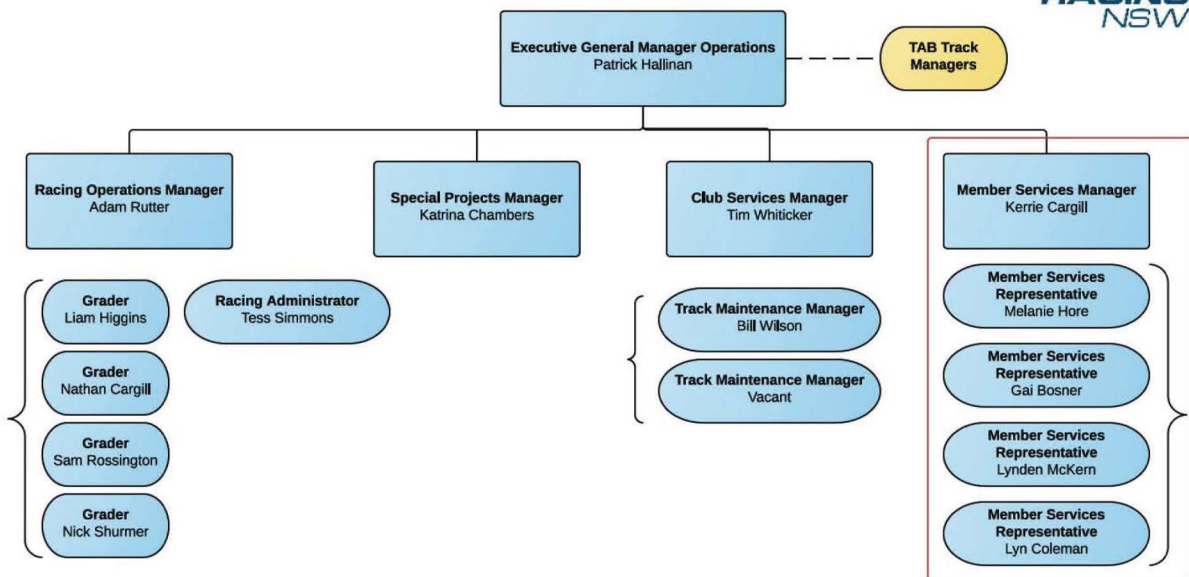


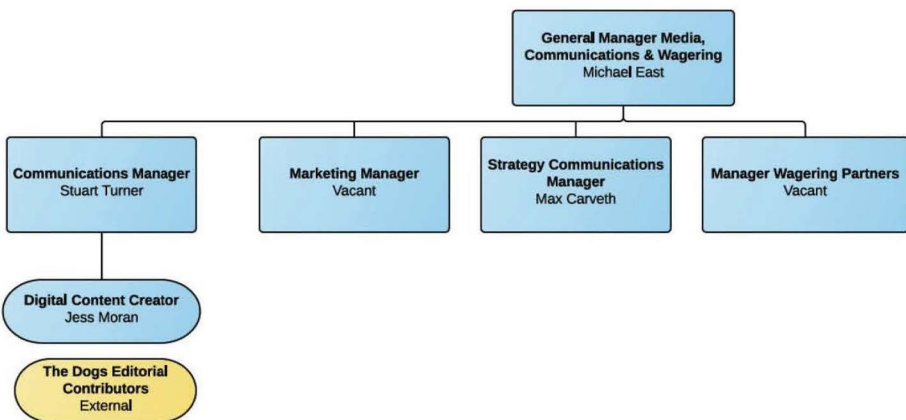
# Organisational chart for GRNSW as at August 2015



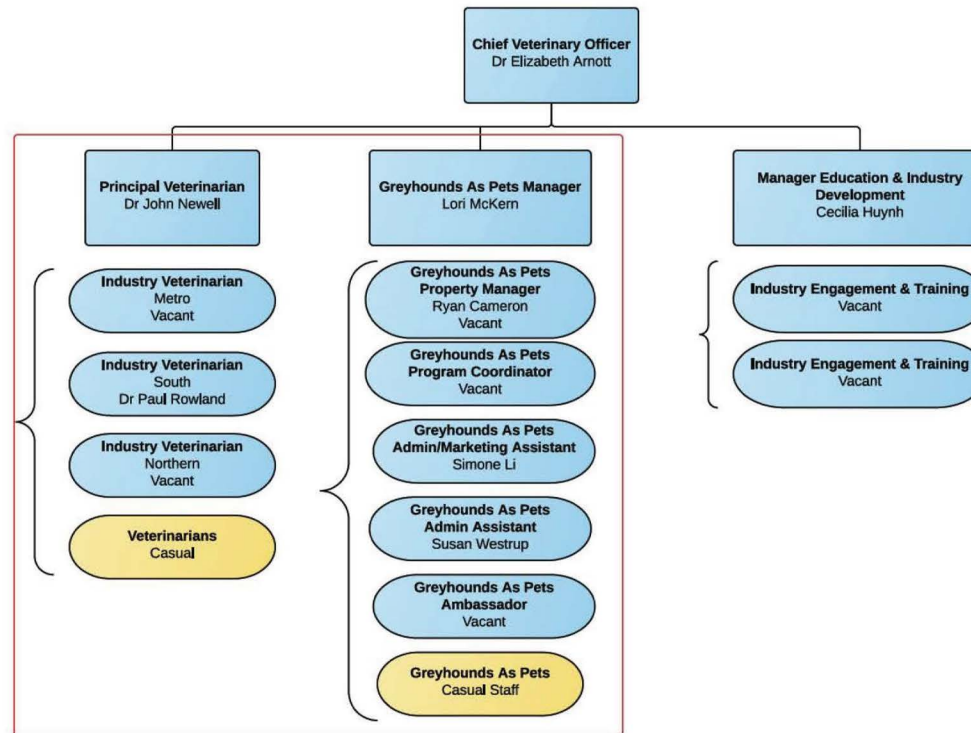


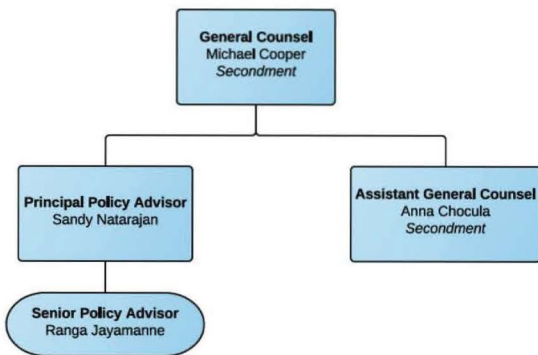












# Organisational chart for GRNSW as at September 2015

